



St. Andrew's Centre Housing Information

12720 - 111 Avenue, Edmonton, AB, T5M 3X3

780-452-4444

info@standrewscentre.com

www.standrewscentre.com

St. Andrew's Centre:

Senior's Independent Living for over 40 years!

In the heart of the historic and elegant Westmount neighbourhood, St. Andrew's Centre's impressive, red brick complex encompasses two seven-storey apartment towers and a three-storey annex, all linked by an atrium lovingly landscaped with a huge selection of tropical plants and jaunty paving stone floors.

St. Andrew's Centre is a community open to seniors aged 60+ of all denominations and faiths. Our beautiful live tropical atrium is entertaining all year round. Residents enjoy the options of a full-service Café and opportunities available for laundry and housekeeping services.

We provide affordable housing with the highest possible standard of living. It is important to note that although we provide "affordable housing", we are not a subsidized facility.

What is Affordable Housing?

As defined by the Canada Mortgage and Housing Corporation (CMHC):

*"In Canada, housing is considered "affordable" if it costs less than 30% of a household's before-tax income. Many people think the term "affordable housing" refers only to rental housing that is subsidized by the government. In reality, it's a very broad term that can include housing provided by the private, public and non-profit sectors. It also includes all forms of housing tenure : rental, ownership and co-operative ownership, as well as temporary and permanent housing."**

At St. Andrew's Centre, we want to ensure that all residents are able to live comfortably. When searching for your new home, it is important to be mindful of this 30% threshold to determine what may be considered as "affordable" within your income.

*CMHC, "About Affordable Housing in Canada", March 31, 2018, <https://www.cmhc-schl.gc.ca/en/professionals/industry-innovation-and-leadership/industry-expertise/affordable-housing/about-affordable-housing/affordable-housing-in-canada>



Suite Rental Rates

Our **inside suites** provide a beautiful view of our tropical atrium while our **outside suites** offer a view of the surrounding community with a spacious outdoor balcony.

All suites are non-smoking and regularly maintained.

Whether you or your loved one(s) are looking for worry-free housing or to downsize your home life with the benefits of an active, established community, we're here to help!

All newly renovated suites

include:

Walk-In Shower

Vinyl Plank Flooring

Kitchenette

Cats and small birds are welcome!

**\$500 pet deposit and current vet records required*

Bachelor

Inside (~439 sq. ft.) **\$1010**

Outside (~381 sq. ft.) **\$1030**

One Bedroom

Inside (~575 sq. ft.) **\$1395**

Outside (~515 sq. ft.) **\$1420**

One Bedroom + Den

Inside (~ 878 sq. ft.) **\$1855**

Two Bedroom

Inside (~878 sq. ft.) **\$1855**

Outside (~900+ sq. ft.) **\$2040+**

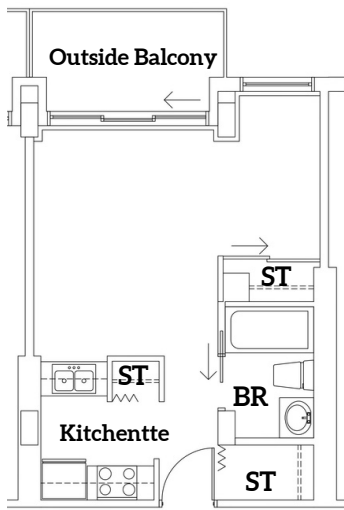
Security Deposit **\$500**

*All rental rates include basic
cable + utilities*

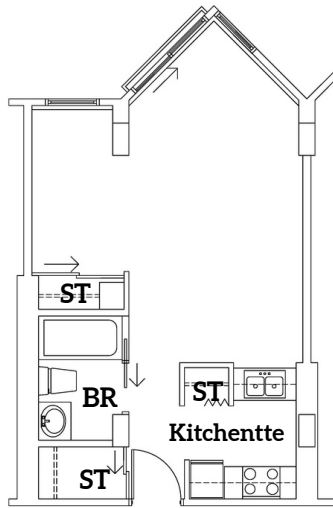


Floor Plans

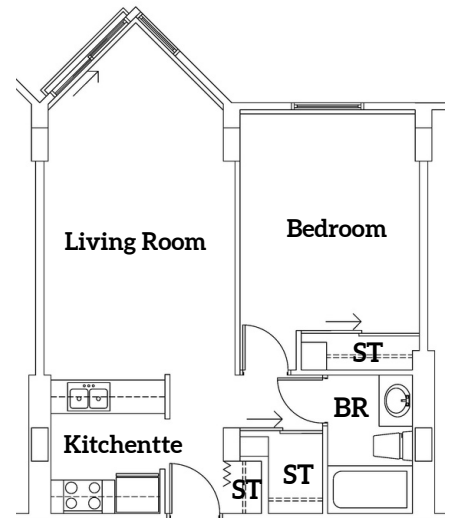
Available suite floor plans may vary. Please contact us directly for more information



Bachelor Outside



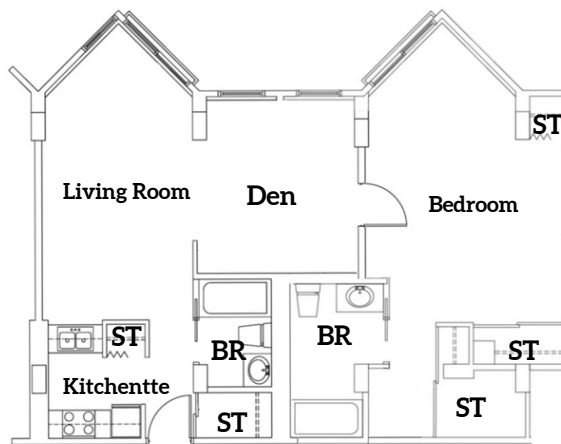
Bachelor Inside



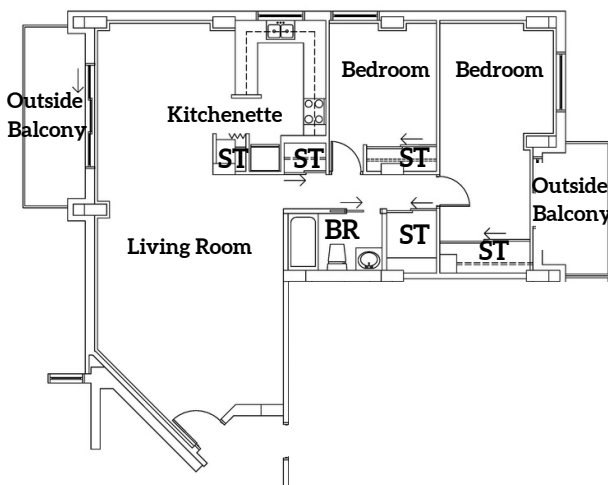
One Bedroom Inside



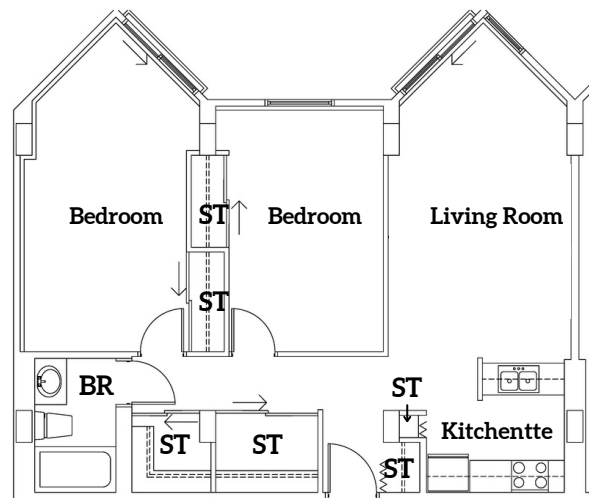
One Bedroom Outside



One Bedroom + Den Inside



Two Bedroom Outside



Two Bedroom Inside

Garden Café

Full-Service Restaurant

The Garden Café serves warm meals for breakfast, lunch, and dinner as well as snacks and refreshments
7 days a week from 9:00am - 6:30pm

Meal Plan Options

Meal Package A - \$800/month per person
3 meals + one snack and one juice per day
Unlimited tea and coffee

Meal Package B - \$575/month per person
2 meals (breakfast **or** lunch **and** supper) +
one snack and one juice per day
Unlimited tea and coffee

Meal Punch Cards - 10 meals per card
Includes coffee, tea, or hot chocolate
Supper - \$115 Breakfast/Lunch - \$90

Coffee Punch Card - 20 coffees
\$25

Hospitality Services

Hospitality services are designed to enhance the independent living of our residents who want or need assistance with basic housekeeping and other household chores.

Service rates are \$30.00 per hour or pro-rated as required.

Additional Services & Amenities Available

Recreational activities and events including fitness classes, resident garden boxes, card games, Residents' Association events, and more!

Free above ground parking

Heated underground parking for \$55/month

Caged storage spaces starting at \$30/month

Coin operated laundromat \$2/load

24/7 onsite staff including security available after office hours

In-house maintenance

Exercise equipment

Computers for resident use

Onsite Services:

Hair & Nail Salon

Pharmacy & Tuck Shoppe

Weekly Farmers' Market

Residents' Library

Guest and Student Suites

...and more!

Monthly Expenses Calculator

Before-tax income (line 150)

Recommended 30% of before-tax income

Divided by 12 to get your monthly income



Monthly Expenses

Rent

Telephone

Internet

Tenant Insurance

Meal Plan

Groceries

Health Insurance

Hospitality Services

Parking (\$55/month)

Storage (starting at \$30/month)

Other: _____

Other: _____

Other: _____

Other: _____

Total Monthly Expenses



Disposable Income

(Monthly Income - Total Monthly Expenses)
